

\$54,049

Median Household Income

\$25,198

Per Capita Income

\$146,537

Median Net Worth

Race and Ethnicity

The largest group: White Alone (82.55)

The smallest group: Pacific Islander Alone (0.17)

Indicator ▲	Value	Diff
White Alone	82.55	+27.08
Black Alone	3.85	-28.5
American Indian/Alaska Native Alone	0.54	+0.19
Asian Alone	2.36	-2.11
Pacific Islander Alone	0.17	+0.09
Other Race	8.22	+3.73
Two or More Races	2.31	-0.5
Hispanic Origin (Any Race)	16.33	+6.24

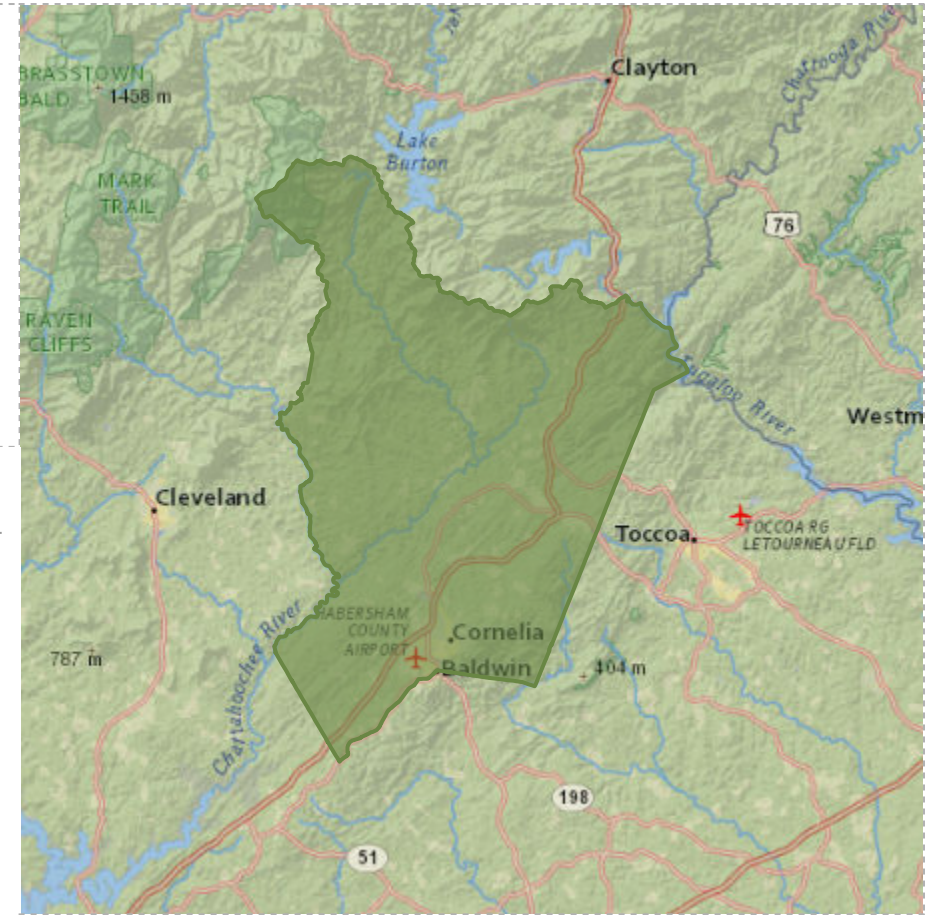
Bars show deviation from Georgia

Habersham County Nfographics

www.nortonintelligence.com



2021



EMPLOYMENT



54%

White Collar



35%

Blue Collar



11%

Services

4.1%

2021 Unemployment Rate

47,189

Population

40.7

Median Age



17,043

Households

\$43,815

Median Disposable Income

19%

No High School Diploma



34%

High School Graduate



26%

Some College



21%

Bachelor's/Grad/Prof Degree



2021 Total Housing Units (Esri)

20,197



2021 Owner Occupied Housing Units (Esri)

13,587

2.60

2010 Average Size of Owner Occupied Housing Units (U.S. Census)

Habersham County
Nfographics



www.nortonintelligence.com

ANNUAL HOUSEHOLD SPENDING



\$1,573

Apparel & Services



\$118

Computers & Hardware



\$2,872

Eating Out



\$4,481

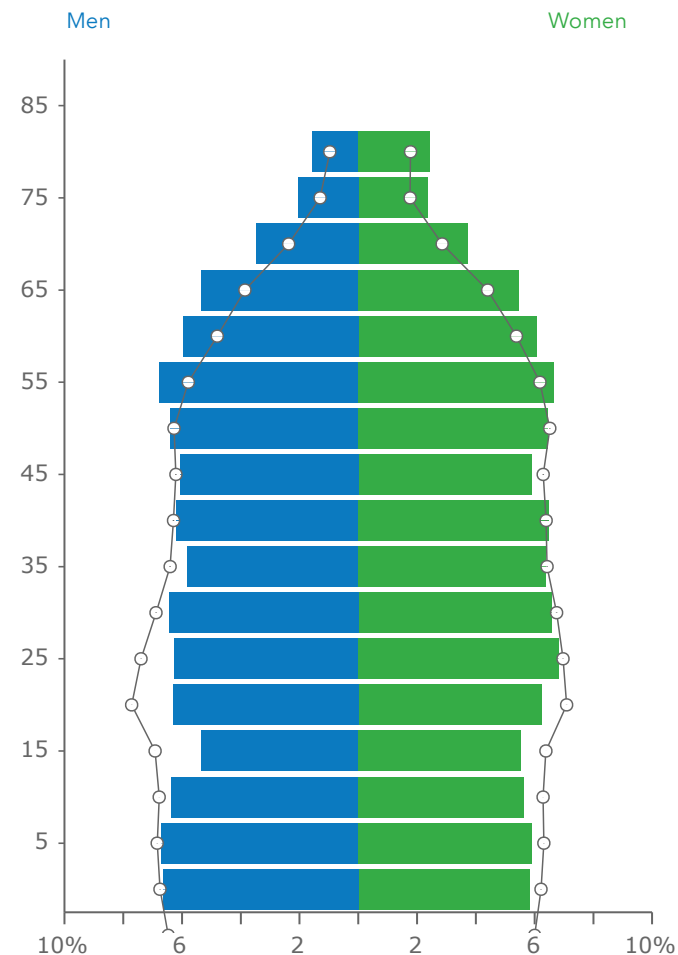
Groceries



\$5,544

Health Care

Age Pyramid



The largest group:
2021 Females Age 30-34

The smallest group:
2021 Males Age 85+

Dots show comparison to

Georgia

BUSINESS



1,457

Total Businesses



15,648

Total Employees

Households By Income

The largest group: \$50,000 - \$74,999 (19.8%)

The smallest group: \$150,000 - \$199,999 (2.9%)

Indicator ▲	Value	Diff
<\$15,000	12.1%	+1.6%
\$15,000 - \$24,999	12.5%	+3.7%
\$25,000 - \$34,999	7.8%	-1.1%
\$35,000 - \$49,999	13.1%	+0.8%
\$50,000 - \$74,999	19.8%	+1.6%
\$75,000 - \$99,999	14.8%	+2.1%
\$100,000 - \$149,999	13.5%	-1.4%
\$150,000 - \$199,999	2.9%	-3.4%
\$200,000+	3.6%	-3.7%

Bars show deviation from

Georgia