



**NORTON NATIVE INTELLIGENCE | [WWW.NORTONINTELLIGENCE.COM](http://WWW.NORTONINTELLIGENCE.COM)  
434 GREEN STREET | GAINESVILLE, GA 30501 | (770) 532-0022**

**GEORGIA DEPARTMENT OF  
REVENUE  
Local Government Services Division  
County Digest Section**

**2022 TAX DIGEST CONSOLIDATED  
SUMMARY**

**County:MONROE County #:102 Tax District:STATE**

**Dist #: 01 Assessment %: 040 Tot Parcels:15891**

AGRICULTURAL				CONSERVATION USE			
Code	Count	Acres	40% Value	Code	Count	Acres	40% Value
A1	2,210		64,142,521	V3	22	629.41	1,050,000
A3	45	108.89	355,000	V4	637	10,250.63	25,549,336
A4	746	4,099.66	12,485,764	V5	1,087	101,786.44	97,537,838
A5	673	25,395.6	22,738,435	V6	133		813,920
A6	2,002		7,816,611	ENVIRONMENTALLY SENSITIVE			
A7	0	0	0	Code	Count	Acres	40% Value
A9	0	0	0	W3	0	0	0
AA	0		0	W4	0	0	0
AB	0		0	W5	0	0	0
AF	2		8,609	PROPERTY EXEMPTIONS			
AI	0		0	Code	Count	M&O	Bond
AZ	0		0	SA	0	0	0
BROWNFIELD PROPERTY				SB	0	0	0
Code	Count	Acres	40% Value	SF	7	5,049,250	0
B1	0		0	SH	0	0	0
B3	0	0	0	SJ	138	14,021,829	0
B4	0	0	0	SP	1,947	1,549,515	0
B5	0	0	0	SN	294	40,650,936	0
B6	0	0	0	ST	1	3,920	0
COMMERCIAL				SV	1,746	100,163,963	0
Code	Count	Acres	40% Value	SW	0	0	0
C1	1,603		55,269,041	SX	0	0	0
C3	472	481.74	14,597,526	STATE HOMESTEAD EXEMPTIONS			
C4	124	820.56	8,851,680	S1	5,367	10,733,100	0
C5	23	2,506.27	4,996,742	S3	71	142,000	0
C7	0	0	0	S4	1,498	79,748,742	0
C9	0	0	0	S5	86	6,130,270	0
CA	0		0	S6	0	0	0
CB	1		17,967	S7	0	0	0
CF	777		35,497,710	S8	0	0	0
CI	288		36,887,874	S9	0	0	0
CP	3		2,605,245	SC	245	22,418,820	0
CZ	19		542,268	SD	45	4,082,293	0
FLPA FAIR MARKET ASSMT				SE	0	0	0

Code	Count	Acres	40% Value
F3	4	15.75	19,480
F4	9	101.85	192,800
F5	125	47,458.83	24,302,032
F9	0	0	0
<b>Total</b>	<b>138</b>	<b>47,576.43</b>	<b>24,514,312</b>

HISTORIC			
Code	Count	Acres	40% Value
H1	3		5,960
H3	1	0.06	5,800

INDUSTRIAL			
Code	Count	Acres	40% Value
I1	70		2,637,410
I3	5	12.34	152,040
I4	7	76.78	780,800
I5	0	0	0
I7	0	0	0
I9	0	0	0
IA	0		0
IB	0		0
IF	9		12,758,408
II	6		2,157,067
IP	4		4,049,999
IZ	3		321,429

FOREST LAND CONSERVATION USE			
Code	Count	Acres	40% Value
J3	4	15.75	19,480
J4	9	101.85	192,800
J5	125	47,458.83	24,302,032
J9	0	0	0

PREFERENTIAL			
Code	Count	Acres	40% Value
P3	0	0	0
P4	0	0	0
P5	0	0	0
P6	0	0	0
P7	0	0	0
P9	0	0	0

SG	0	0	0
SS	0	0	0
LOCAL HOMESTEAD EXEMPTIONS			
L1	0	0	0
L2	0	0	0
L3	0	0	0
L4	0	0	0
L5	0	0	0
L6	0	0	0
L7	0	0	0
L8	0	0	0
L9	0	0	0

<b>TOTAL</b>	<b>11,445</b>	<b>284,694,638</b>	<b>0</b>
--------------	---------------	--------------------	----------

EXEMPT PROPERTY		
Code	Count	40% Value
E0	5	1,225,360
E1	275	63,687,271
E2	171	4,787,558
E3	15	304,366
E4	73	534,760
E5	10	151,920
E6	17	928,424
E7	0	0
E8	0	0
E9	1	9,104,970

<b>TOTAL</b>	<b>567</b>	<b>80,724,629</b>
--------------	------------	-------------------

SUMMARY			
Code	Count	Acres	40% Value
Agricultural	5,678	29,604.15	107,546,940
Brownfield Property	0	0	0
Commercial	3,310	3,808.57	159,266,053
Historical	4	0.06	11,760
Industrial	104	89.12	22,857,153
Forest Land Cons Use	138	47,576.43	24,514,312
Preferential	0	0	0
Qualified Timberland	0	0	0
Residential	34,625	35,550.38	725,848,843

**QUALIFIED TIMBERLAND**

Code	Count	Acres	40% Value
Q4	0	0	0
Q5	0	0	0

**RESIDENTIAL**

Code	Count	Acres	40% Value
R1	20,338		540,920,811
R3	9,946	16,761.33	119,560,033
R4	2,473	18,318.55	61,983,579
R5	14	470.5	843,720
R6	33		59,360
R7	0	0	0
R9	0	0	0
RA	2		5,000
RB	1,819		2,476,340
RF	0		0
RI	0		0
RZ	0		0

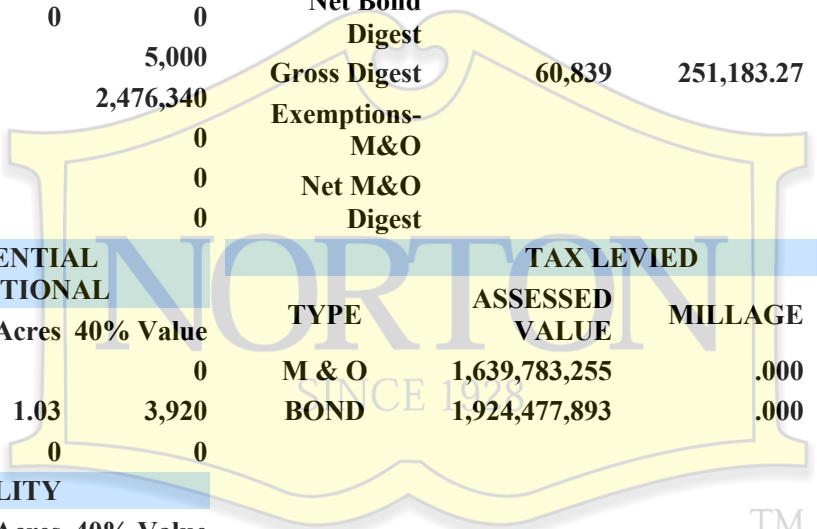
Residential Transitional	1	1.03	3,920
Utility	133	1,118.64	738,130,405
Conservation Use	1,879	112,666.48	124,951,094
Environmentally Sensitive	0	0	0
Motor Vehicle	14,189		15,094,400
Mobile Home	673		2,345,787
Timber 100%	78	20,768.41	3,900,239
Heavy Equipment	27		6,987
Gross Digest	60,839	251,183.27	1,924,477,893
Exemptions Bond			0
Net Bond Digest			1,924,477,893
Gross Digest	60,839	251,183.27	1,924,477,893
Exemptions-M&O			284,694,638
Net M&O Digest			1,639,783,255

**RESIDENTIAL TRANSITIONAL TAX LEVIED**

Code	Count	Acres	40% Value	TYPE	ASSESSED VALUE	MILLAGE	TAX
T1	0		0	M & O	1,639,783,255	.000	0.00
T3	1	1.03	3,920	BOND	1,924,477,893	.000	0.00
T4	0	0	0				

**UTILITY**

Code	Count	Acres	40% Value
U1	0		0
U2	97	0	738,115,997
U3	8	10.62	120
U4	21	92.99	5,698
U5	7	1,015.03	8,590
U7	0	0	0
U9	0	0	0
UA	0		0
UB	0		0
UF	0		0
UZ	0		0



## SERVICES

- INSURANCE
- REAL ESTATE
  - COMMERCIAL
  - RESIDENTIAL
  - ACREAGE
  - INVESTMENTS
  - RECREATIONAL TOURISM
- MANAGEMENT
  - MULTI FAMILY
  - COMMERCIAL
  - HOME RENTAL
  - COMMUNITY MANAGEMENT
  - RAW ACREAGE
- RELOCATION
- HOME SERVICES
- CONSULTATION
- RESEARCH
- MORTGAGE
- DEVELOPMENT
- REO

## DATA PRODUCTS

- COUNTY DEMOGRAPHICS
- ANNUAL FORECASTS
- DEEP DIVE
- MONTHLY INDICATORS
- TEMPERATURE GAUGES
- MARKET WATCH
- LAKE REPORTS
- RESIDENTIAL REPORTS
- COUNTY DASHBOARDS
- ANNUAL TRAFFIC PATTERNS
- NFOGRAPHICS
- CUSTOM CONSULTATIONS



GAINESVILLE 770.532.0022 | GA400 770.887.0053  
CLARKESVILLE 706.754.5700 | CLEVELAND 706.865.5400  
BRASELTON 770.307.0087